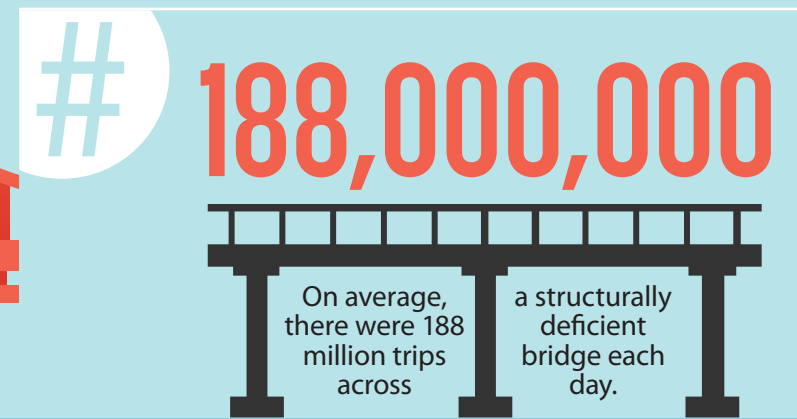
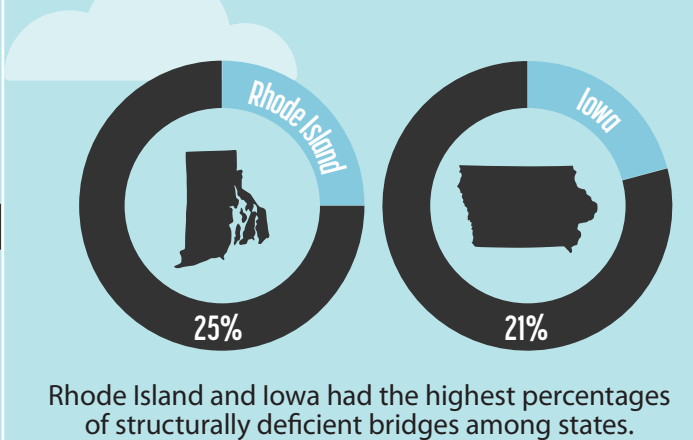
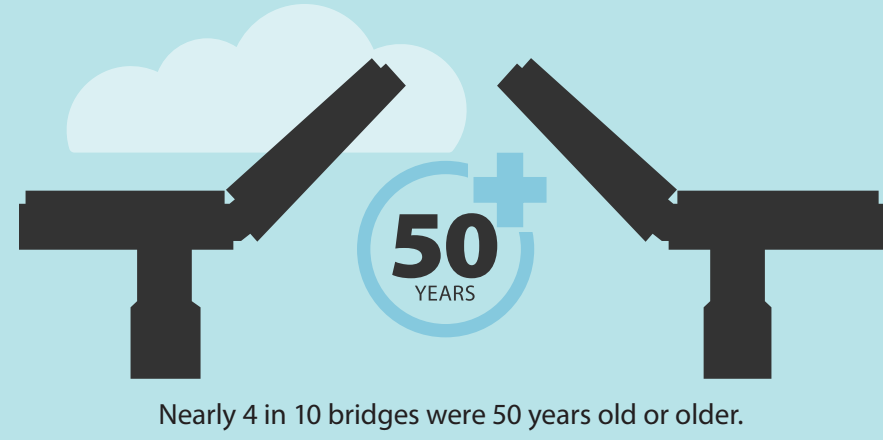


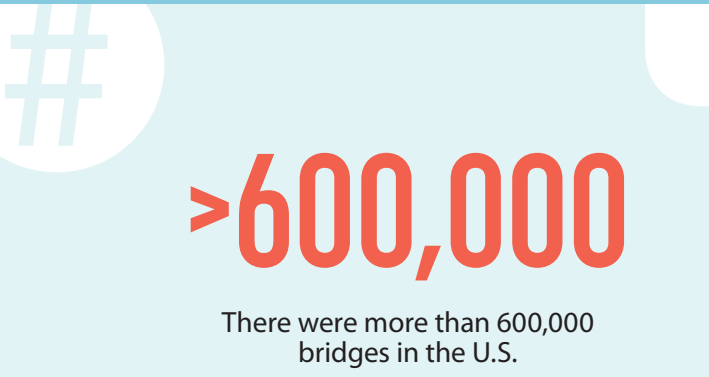
How Safe are our Bridges?



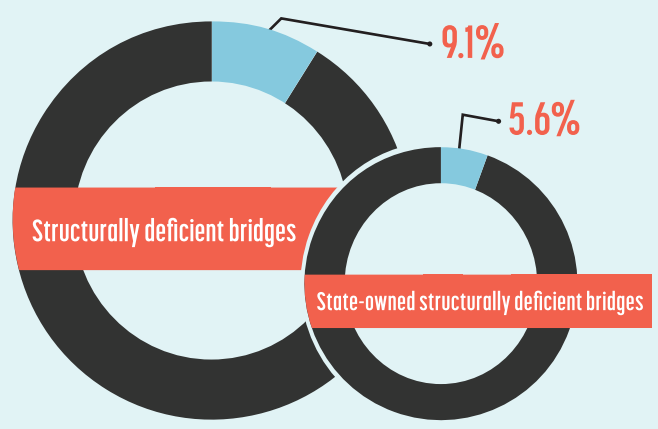
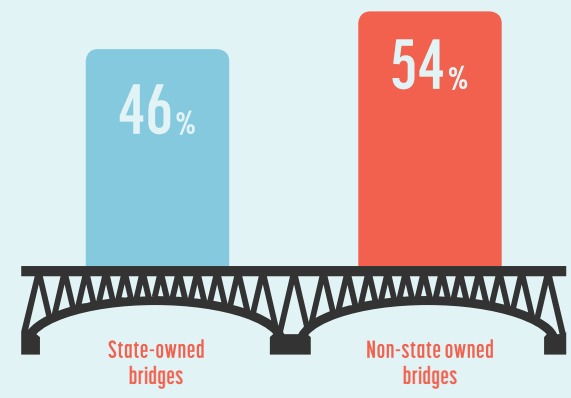
Source: CSG's Calculations of data from the U.S. Department of Transportation Federal Highway Administration and the 2017 ASCE Infrastructure Report Card.



Percent of Bridges that are structurally deficient



in 2016



More than 55,000—or 9.1 percent—of all bridges were structurally deficient. Just under 16,000—or 5.6 percent —of state-owned bridges were structurally deficient.

